

BOG #321 = Beaverkill Range east 280-93

with Steve Parisot & Sam Adams 9/6/10

Compare with field notes of 1997 (p. 280-22) & 2009 (p. 280-89)

site	p	Δp	Δe 0.946	e calc	e map	time	R
(A) BM2575' lat camp	29-09	0-00	0	—	2575	10-12 to 10-20	$R_1 =$ $\frac{3360' - 2575'}{29-09'' - 28-26''}$ $= \frac{785'}{0.83''} = \text{0.946}$
(B) Fall Brook leanto	28-96	0-13	123	2698		11-00	
(C) Top low ledge	28-87	0-22	208	2783		11-14	
(D) cross dry rill	28-86	0-23	218	2793		11-20	
(E) base steep	28-84	0-25	237	2812	2800		
(F) corner ?	28-76	0-33	312	2887		11-36	
(G) falls in wet weather	28-70	0-39	369	2944	3000	11-44	
(H) possible old skid rd	28-66	0-43	407	2982		11-48	
(I) \$ camp, 1st	28-62	0-47	445	3020			
(J) 2nd ledge	28-56	0-53	501	3076		11:55 to 12:07	
(K) 3rd ledge	28-46	0-63	596	3171			
(L) 1st stump	28-40	0-69	653	3228			
(M) Bog #321	28-26	0-83	785	3360	3360	12-36	$R_2 =$ $\frac{3360' - 2575'}{28-96'' - 28-22''}$ $= \frac{785'}{0.74''} =$ 1.061
(N) BC stump	28-22	0-74	1.061	3360	3360	2:00	
(O) herd path, Surveyor	28-27	0-69	732	3307		2:15	
(P) Stump clump	28-38	0-58	615	3190			
(Q) Upper boglet	28-42	0-54	573	3148			
(R) newer log road	28-46	0-50	531	3106		2:47	
(S) Lower boglet	28-50	0-46	488	3063		2:50	
(T) blaze	28-50	0-46	488	3063			
(U) big ASH	28-80	0-16	170	2745			
(V) on trail	28-92	0-04	42	2617		3:27	
(W) BM2653	28-83	0-13	90	2665	2653	3:46	
(X) Fall Brook leanto	28-88	0-08	85	2660		4:00	
(Y) BM2575'	28-96	0-00	0	—	2575	4:51	
(Z) Scutellaria Swab	28-96	0-00	"	"	2575	4:30	

More times on Map. 280-96

Leave parking area 9:52 AM, about 40 minutes from Big Indian.

(A) At last camp are several red spruce planted along N edge of clearing, in addn. to the big one on lawn. Look for a concrete slab behind the spruce and find BM2575. 2575'

(W) Scutellaria swale - for flora, see p. 280-95

(B) ^{2660'} } Fall Brook Lean-to. Sun angle at 11:00 DST, 10:00 EST 155° mag, 142° true on 9/6/10

(C) 2783' SE-projecting small spur has a low ledge top. Not enough to affect forest.

(D) 2793' Cross dry rill, flowing in 2009 as site _____. Ilex montana 11-24 and 30" BC.

(E) 2812' Large sucs at base of steep talus slope. 24" to 36" dbh. Canopy could be 100' tall.

(F) 2887' Stone cairn with yellow paint could be a SMK corner but few blazes visible. ~~However~~ One SMK sign is on a tree along the line to the NE plus one yellow blaze. NO pipe marks the possible corner.

Above cairn, follow ravine 10 to 15' deep eroded into till. Dry now.

280-94

(G) In wet season, ravine brook flows over 2944' a 10' high ledge, the 1st obs on this steep slope above (E), creating a water-fall. Less steep above.

(H) 2982' Possible old skid road to NE now a swath of DP, treeless.

(I) 3020' 30" YB dead - 1st Camyloptera.

(J) 3076' Ledge to the SW, also about 10' high. 22" SUG, 26" YB on terrace above. Snack stop for 12 minutes. Skid road (new) on terrace above, then up steep talus with a 20' ledge to the NE.

(K) Top 20' ledge 3171'

(L) 3228' 1st stump obs, about 40y from the earlier logging, on a terrace, then up again. Cx brunn characteristically forms hanging festoons on a boulder. CB.

(M) 3360' Approaching Bog #321, a 30" YB and a dead fir, from E side of bog. Only a few fir seeds obs at S end of pool, but quite a few dead ones. Is Fir pop'n here decreasing? See 10/26/09 notes.

Pool water properties:

pH Steve's Meter	4.27	} see 1997 & 2009 values
MK low scale	4.4	
MK high scale	4.1	

Water temp
Steve 12.6°C
MK 54°F

280-95

(M) continued. Flora based on Dan Spada's wetland #31?

- Juncus (taller) canadensis?
- Juncus (short & fine)
- Glyceria _____ floating on water with a few upright panicles emergent.
- Cx-trispenna

One 16" old KEM E of S end of pod, not obs- be fore? Compare elev. with KEM in col betw. BL Mtnd W Schoolhouse. CC + COPTIS.

(V) BC stump with 2y sprout. Bark on. Was last logging in 2007? Small Camyloptera glade.

(N) Head path running directly down gentle slope connecting at least 3 survey stakes. Seat sub + BC, but B dom. On the 3200' spur.

Black Cherry Stumps with bark on. Maybe 2007?

Tree #	25	95 y, 22" diam.	BC
	26	85 y, 18" diam	BC
3148' (O)	27	90 y, 17" diam	BC in a stump

clump of several close together One older stump has a 5 to 6 y KB growing out of it.

(P) Flat terrace with main log road heading W → E. Upper boglet just visible about 150 to 200 ft to the south. Spada #31. No surface water. Several fir, KEM, KB, CINN, Cx follic, VACC myrt, ILEX VERT, COPTIS, VCASS.

(PP) VACC myrt - DP opening NE of upper boglet may show up on aerial photos - big enough? 1/4 acre. Bedrock just under the surface. BC dom surrounding. CC here as in Bog #321.

(Q) Cross new log road running N-S, then a few fir with lower boglet visible about 150' to NE.

(R) Several fir in lower Boglet. 3063' Scirpus pedunculatus (Spada), Juncus Chirogenes, Cx cinnita. No water visible on surface. Cx trispenna in cerise tufts on drier edge.

SNK blaze just E of Lower Boglet.

2745' (S) S. intermedia + 27" BC below ledge Big ASH. Whole steep descent without

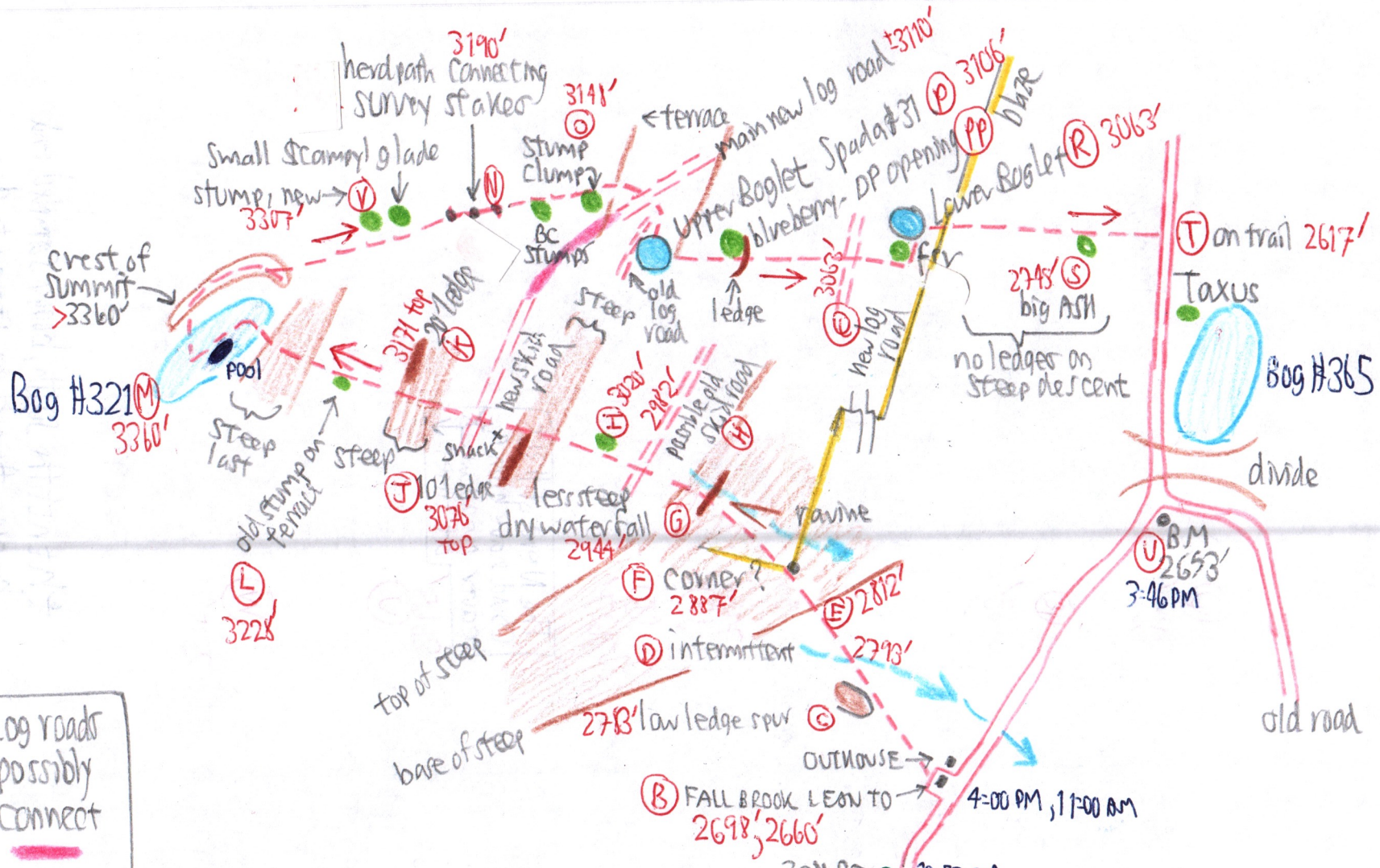
(T) On trail N of Bog #365. 2617' Taxus along trail NW cor of #365. In #365: Cx baileyi

The N end of #365 could have been a beaver meadow at times
Glyceria borealis
Chirogenes
Alnus

2665' (U) BM 2653. Someone since OCT-2009 removed the partial Hypnum cover & exposed the whole BM.

(W) Scutellaria swale var BASS + ASH, 2575' VV, Chelone, R pub, GAL, LAP, OSMUNDA CLAYT, EPILORIUM AEDENO, SOLID LAT.

*but not the south, boggy sampled end because there is no stream to dam. Outlet at N end - look for old dams next time.



Log roads possibly connect

Compare this route with that of 10/26/09 with Will Nixon, p. 240-89. Ascent above lean to was parallel but farther to the SW missing the steep ledges. Descent was also farther south, bypassing the 2 boglets on the north & the steep ledges on the north. 2009 route in orange (approx.)

- (B) FALL BROOK LEAN TO 2698', 2660' 4:00 PM, 11:00 AM
- 32" BC 10:52 AM
- Osmonds Swale 10:45 AM
- double road 10:44 AM
- 2575' Scutellaria Swale 4:30 to 4:40 PM, 10:36 AM
- BM 2575 4:45 PM
- red spruce grove 4:49 AM
- 2575' (A) last cabin bigger red spruce 4:51 PM, 10:20 AM
- SNY blaze 4:49 AM
- 4:55 PM; culvert 4:56, then Patton's Parking 4:56;
- penultimate camp 5:02

280-95